

The Specially Created Exhibition

IN 2010

ENCOUNTER WITH “UMA”

---The world of the unknown mysterious animals---

THE MYSTERIOUS ANIMAL...which is said to have been in existence but not to have been scientifically confirmed yet, that is, Cryptids, so-called “THE UNIDENTIFIED MYSTERIOUS ANIMAL” : “UMA” in Japan. THE LEGENDARY ANIMAL (Fantasy animal) which came into being in people’s imagination and romances. THE MYSTERIOUS ANIMAL which is already identified but has abnormal habit and morphology. AND SO FORTH. THESE ARE ULTIMATE MYSTERIOUS ANIMALS.

Let’s steal into the space where they live, and find out their real truth.

July 3, Saturday, 2010 ~ September 5, Sunday, 2010



The Hagi Museum

355 Horiuchi, Hagi City, Yamaguchi 758-0057

2010年 UMAとの遭遇

~知られざるミステリアーアニマルの世界~



IN 2010 ENCOUNTER WITH "UMA" ---The world of the unknown mysterious animals---

The science navigator
in the Hagi Museum
DOCTOR HAGINSTEIN
(abbreviation: HAAGII)

The mysterious human
beast in Hibayama

HIBAGON

The first opening
to the public in
Yamaguchi prefecture!

**THE MUMMY OF
A KAPPA ,
A WATER SPRITE**

It is a water sprite,
a legendary animal
which was handed down
from generation to
generation in the old
tales and the anecdotes.
The mummy has been
in existence!

The first opening
to the public in
Yamaguchi prefecture

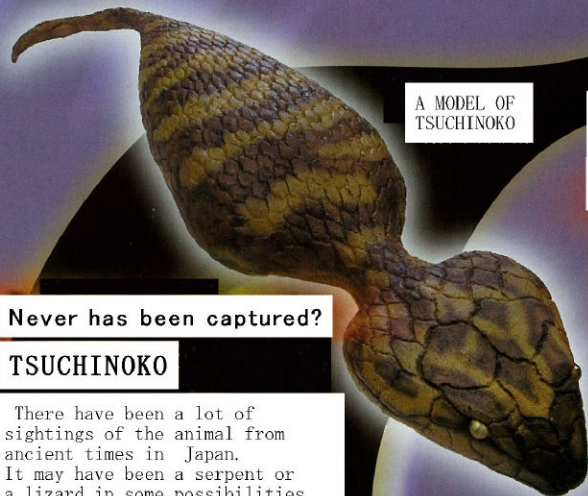
THE MUMMY OF "Ningyo"

**THE FANTASTIC
OCTOPUS**
which can take the
shape of a snake

It is now surviving!

**THE LEGENDARY
HEAD OF A SERPENT**

In the Edo period,
the principal of
Meirinkan, the
domain's public
school said,
"In Hakata a big
serpent was captured
and its head
was received by
the Kaichoji temple
in Hagi."
The head of the serpent
has existed in the
temple for centuries.



A MODEL OF
TSUCHINOKO

**UMA which brings
forth happiness!**

KESALANPATHARAN

It is said to
grow up and
multiply in the
chest of drawers,
and bring happi-
ness to its owner.
It looks like a
hairy ball.
The spot, which
was handed down
in Yamagata pre-
fecture, is
specially exhibited!

Never has been captured?

TSUCHINOKO

There have been a lot of
sightings of the animal from
ancient times in Japan.
It may have been a serpent or
a lizard in some possibilities.
But only a few specimens of
so-called TSUCHINOKO have been
discovered!

A SPECIMEN preserved
in formalin

**THE ILLUSORY
GIANT FISH**
in the
Ohtori Pond

**THE UNIDENTIFIED
HUMPS** which appear
in Lake Ikeda

NESSIE
in Lake Kussharo?

Was it in existence?

**THE FORTY-FIVE-LEGGED
GROTESQUE OCTOPUS**



**THE ILLUSORY
BEAST IN THE
EDO PERIOD**
scary even now

Finally encountered!
We encountered with
the ultimate mysterious animal.
What is the identity
of the animal?

The place was the den
where the elite of
the mysterious animals
had been brought up.

Where on earth is
the specified place?

